

QULIPTA- atogepant tablet

AbbVie Inc.

HIGHLIGHTS OF PRESCRIBING INFORMATION

These highlights do not include all the information needed to use QULIPTA safely and effectively. See full prescribing information for QULIPTA.

QULIPTA® (atogepant) tablets, for oral use
Initial U.S. Approval: 2021

RECENT MAJOR CHANGES

Indications and Usage (1)	4/2023
Dosage and Administration (2.1, 2.2)	4/2023
Contraindications (4)	4/2023
Warnings and Precautions (5.1)	4/2023

INDICATIONS AND USAGE

QULIPTA is a calcitonin gene-related peptide receptor antagonist indicated for the preventive treatment of migraine in adults. (1)

DOSAGE AND ADMINISTRATION

- QULIPTA is taken orally with or without food. (2.1)
- For episodic migraine, the recommended dosage is 10 mg, 30 mg, or 60 mg taken once daily. (2.1)
- For chronic migraine, the recommended dosage is 60 mg taken once daily. (2.1)
- Severe Renal Impairment or End-Stage Renal Disease (2.2, 8.6):
 - Episodic migraine: 10 mg once daily.
 - Chronic migraine: Avoid use.

DOSAGE FORMS AND STRENGTHS

Tablets: 10 mg, 30 mg, and 60 mg. (3)

CONTRAINDICATIONS

Patients with a history of hypersensitivity to atogepant or to any of the components of QULIPTA. (4)

WARNINGS AND PRECAUTIONS

If a hypersensitivity reaction occurs, discontinue QULIPTA and initiate appropriate therapy. Severe hypersensitivity reactions have included anaphylaxis and dyspnea. These reactions can occur days after administration. (5.1)

ADVERSE REACTIONS

The most common adverse reactions (at least 4% and greater than placebo) are nausea, constipation, and fatigue/somnolence. (6.1)

To report SUSPECTED ADVERSE REACTIONS, contact AbbVie at 1-800-678-1605 or FDA at 1-800-FDA-1088 or www.fda.gov/medwatch.

DRUG INTERACTIONS

Recommended dosage modifications:

- Strong CYP3A4 Inhibitor (2.2, 7.1):
 - Episodic migraine: 10 mg once daily.
 - Chronic migraine: avoid use.
- Strong, Moderate, or Weak CYP3A4 Inducers (2.2, 7.2):
 - Episodic migraine: 30 mg or 60 mg once daily.
 - Chronic migraine: avoid use.
- OATP Inhibitors (2.2, 7.3):
 - Episodic migraine: 10 mg or 30 mg once daily.
 - Chronic migraine: 30 mg once daily.

USE IN SPECIFIC POPULATIONS

- Pregnancy: Based on animal data, may cause fetal harm. (8.1)

- Avoid use in patients with severe hepatic impairment. (8.7)

See 17 for **PATIENT COUNSELING INFORMATION** and **FDA-approved patient labeling**.

Revised: 6/2023

FULL PRESCRIBING INFORMATION: CONTENTS*

- 1 INDICATIONS AND USAGE**
- 2 DOSAGE AND ADMINISTRATION**
 - 2.1 Recommended Dosage**
 - 2.2 Dosage Modifications**
- 3 DOSAGE FORMS AND STRENGTHS**
- 4 CONTRAINDICATIONS**
- 5 WARNINGS AND PRECAUTIONS**
 - 5.1 Hypersensitivity Reactions**
- 6 ADVERSE REACTIONS**
 - 6.1 Clinical Trials Experience**
 - 6.2 Postmarketing Experience**
- 7 DRUG INTERACTIONS**
 - 7.1 CYP3A4 Inhibitors**
 - 7.2 CYP3A4 Inducers**
 - 7.3 OATP Inhibitors**
- 8 USE IN SPECIFIC POPULATIONS**
 - 8.1 Pregnancy**
 - 8.2 Lactation**
 - 8.4 Pediatric Use**
 - 8.5 Geriatric Use**
 - 8.6 Renal Impairment**
 - 8.7 Hepatic Impairment**
- 11 DESCRIPTION**
- 12 CLINICAL PHARMACOLOGY**
 - 12.1 Mechanism of Action**
 - 12.2 Pharmacodynamics**
 - 12.3 Pharmacokinetics**
- 13 NONCLINICAL TOXICOLOGY**
 - 13.1 Carcinogenesis, Mutagenesis, Impairment of Fertility**
- 14 CLINICAL STUDIES**
 - 14.1 Episodic Migraine**
 - 14.2 Chronic Migraine**
- 16 HOW SUPPLIED/STORAGE AND HANDLING**
 - 16.1 How Supplied**
 - 16.2 Storage and Handling**
- 17 PATIENT COUNSELING INFORMATION**

* Sections or subsections omitted from the full prescribing information are not listed.

FULL PRESCRIBING INFORMATION

1 INDICATIONS AND USAGE

QULIPTA is indicated for the preventive treatment of migraine in adults.

2 DOSAGE AND ADMINISTRATION

2.1 Recommended Dosage

QULIPTA is taken orally with or without food.

Episodic Migraine

The recommended dosage of QULIPTA for episodic migraine is 10 mg, 30 mg, or 60 mg taken once daily.

Chronic Migraine

The recommended dosage of QULIPTA for chronic migraine is 60 mg taken once daily.

2.2 Dosage Modifications

Dosing modifications for concomitant use of specific drugs and for patients with renal impairment are provided in Table 1.

Table 1: Dosage Modifications for Drug Interactions and for Specific Populations

Dosage Modifications	Recommended Once Daily Dosage for Episodic Migraine	Usage and Recommended Once Daily Dosage for Chronic Migraine
Concomitant Drug [see Drug Interactions (7)]		
Strong CYP3A4 Inhibitors (7.1)	10 mg	Avoid use
Strong, Moderate, or Weak CYP3A4 Inducers (7.2)	30 mg or 60 mg	Avoid use
OATP Inhibitors (7.3)	10 mg or 30 mg	30 mg
Renal Impairment [see Use in Specific Populations (8)]		
Severe Renal Impairment and End-Stage Renal Disease (CLcr <30 mL/min) (8.6)	10 mg	Avoid use

3 DOSAGE FORMS AND STRENGTHS

QULIPTA 10 mg is supplied as white to off-white, round biconvex tablets debossed with "A" and "10" on one side.

QULIPTA 30 mg is supplied as white to off-white, oval biconvex tablets debossed with "A30" on one side.

QULIPTA 60 mg is supplied as white to off-white, oval biconvex tablets debossed with "A60" on one side.

4 CONTRAINDICATIONS

QULIPTA is contraindicated in patients with a history of hypersensitivity to atogepant or any of the components of QULIPTA. Reactions have included anaphylaxis and dyspnea [see *Warnings and Precautions (5.1)*].

5 WARNINGS AND PRECAUTIONS

5.1 Hypersensitivity Reactions

Hypersensitivity reactions, including anaphylaxis, dyspnea, rash, pruritus, urticaria, and facial edema, have been reported with use of QULIPTA [see *Adverse Reactions (6.2)*]. Hypersensitivity reactions can occur days after administration. If a hypersensitivity reaction occurs, discontinue QULIPTA and institute appropriate therapy [see *Contraindications (4)*].

6 ADVERSE REACTIONS

6.1 Clinical Trials Experience

Because clinical trials are conducted under widely varying conditions, adverse reaction rates observed in the clinical trials of a drug cannot be directly compared to rates in the clinical trials of another drug and may not reflect the rates observed in practice.

The safety of QULIPTA was evaluated in 2657 patients with migraine who received at least one dose of QULIPTA. Of these, 1225 patients were exposed to QULIPTA for at least 6 months, and 826 patients were exposed for 12 months.

In the 12-week, placebo-controlled clinical studies (Studies 1, 2, and 3), 314 patients received at least one dose of QULIPTA 10 mg once daily, 411 patients received at least one dose of QULIPTA 30 mg once daily, 678 patients received at least one dose of QULIPTA 60 mg once daily, and 663 patients received placebo [see *Clinical Studies (14)*]. Approximately 88% were female, 75% were White, 13% were Black, 10% were Asian, and 10% were of Hispanic or Latino ethnicity. The mean age at study entry was 41 years (range 18 to 74 years).

The most common adverse reactions (incidence at least 4% and greater than placebo) are nausea, constipation, and fatigue/somnolence.

Table 2 summarizes the adverse reactions that occurred during Studies 1, 2, and 3.

Table 2: Adverse Reactions Occurring with an Incidence of At Least 2% for QULIPTA and Greater than Placebo in Studies 1, 2, and 3*

	Placebo (N= 663) or	QULIPTA 10 mg (N=314)	QULIPTA 30 mg (N=411)	QULIPTA 60 mg (N=678)
--	---------------------------	-----------------------------	-----------------------------	-----------------------------

	n	%	%	%
Nausea	3	5	6	9
Constipation	2	6	6	8
Fatigue/Somnolence	4	4	4	5
Decreased Appetite	<1	2	1	3
Dizziness	2	2	2	3

* 10 mg and 30 mg incidence from Studies 1 and 2; 60 mg pooled incidence from Studies 1, 2, and 3.

The adverse reactions that most commonly led to discontinuation of QULIPTA in these studies were nausea (0.6%), constipation (0.5%), and fatigue/somnolence (0.2%).

Liver Enzyme Elevations

In Study 1, Study 2, and Study 3, the rate of transaminase elevations over 3 times the upper limit of normal was similar between patients treated with QULIPTA (0.9%) and those treated with placebo (1.2%). However, there were cases with transaminase elevations over 3 times the upper limit of normal that were temporally associated with QULIPTA treatment; these were asymptomatic and resolved within 8 weeks of discontinuation. There were no cases of severe liver injury or jaundice.

Decreases in Body Weight

In Study 1, Study 2, and Study 3, the proportion of patients with a weight decrease of at least 7% at any point was 2.5% for placebo, 3.8% for QULIPTA 10 mg, 3.2% for QULIPTA 30 mg, and 5.3% for QULIPTA 60 mg.

6.2 Postmarketing Experience

The following adverse reactions have been identified during post approval use of QULIPTA. Because these reactions are reported voluntarily from a population of uncertain size, it is not always possible to estimate their frequency or establish a causal relationship to drug exposure.

Immune System Disorders: Hypersensitivity (e.g., anaphylaxis, dyspnea, rash, pruritus, urticaria, facial edema) [see *Contraindications (4) and Warnings and Precautions (5.1)*]

7 DRUG INTERACTIONS

7.1 CYP3A4 Inhibitors

Coadministration of QULIPTA with itraconazole, a strong CYP3A4 inhibitor, resulted in a significant increase in exposure of atogepant in healthy subjects [see *Clinical Pharmacology (12.3)*]. For episodic migraine, the recommended dosage of QULIPTA with concomitant use of strong CYP3A4 inhibitors is 10 mg once daily. For chronic migraine, avoid concomitant use of strong CYP3A4 inhibitors with QULIPTA [see *Dosage and Administration (2.2)*]. No dosage adjustment of QULIPTA is needed with concomitant use of moderate or weak CYP3A4 inhibitors.

7.2 CYP3A4 Inducers

Coadministration of QULIPTA with steady state rifampin, a strong CYP3A4 inducer, resulted in a significant decrease in exposure of atogepant in healthy subjects [see *Clinical Pharmacology (12.3)*]. Concomitant administration of QULIPTA with moderate inducers of CYP3A4 can also result in decreased exposure of atogepant. Coadministration of QULIPTA with steady-state topiramate, a weak CYP3A4 inducer, resulted in decreased exposure of atogepant in healthy subjects [see *Clinical Pharmacology (12.3)*].

For episodic migraine, the recommended dosage of QULIPTA with concomitant use of strong, moderate, or weak CYP3A4 inducers is 30 mg or 60 mg once daily [see *Dosage and Administration (2.2)*].

For chronic migraine, avoid concomitant use of strong, moderate, or weak CYP3A4 inducers with QULIPTA [see *Dosage and Administration (2.2)*].

7.3 OATP Inhibitors

Coadministration of QULIPTA with single dose rifampin, an OATP inhibitor, resulted in a significant increase in exposure of atogepant in healthy subjects [see *Clinical Pharmacology (12.3)*]. For episodic migraine, the recommended dosage of QULIPTA with concomitant use of OATP inhibitors is 10 mg or 30 mg once daily. For chronic migraine, the recommended dosage of QULIPTA with concomitant use of OATP inhibitors is 30 mg once daily [see *Dosage and Administration (2.2)*].

8 USE IN SPECIFIC POPULATIONS

8.1 Pregnancy

Risk Summary

There are no adequate data on the developmental risk associated with the use of QULIPTA in pregnant women. In animal studies, oral administration of atogepant during the period of organogenesis (rats and rabbits) or throughout pregnancy and lactation (rats) resulted in adverse developmental effects (decreased fetal and offspring body weight in rats; increased incidence of fetal structural variations in rabbits) at exposures greater than those used clinically [see *Data*].

In the U.S. general population, the estimated background risk of major birth defects and miscarriages in clinically recognized pregnancies is 2-4% and 15-20%, respectively. The estimated rate of major birth defects (2.2%-2.9%) and miscarriage (17%) among deliveries to women with migraine are similar to rates reported in women without migraine.

Clinical Considerations

Disease-Associated Maternal and/or Embryo/Fetal Risk

Published data have suggested that women with migraine may be at increased risk of preeclampsia and gestational hypertension during pregnancy.

Data

Animal Data

Oral administration of atogepant (0, 5, 15, 125, or 750 mg/kg/day) to pregnant rats

during the period of organogenesis resulted in decreases in fetal body weight and in skeletal ossification at the two highest doses tested (125 and 750 mg/kg), which were not associated with maternal toxicity. At the no-effect dose (15 mg/kg/day) for adverse effects on embryofetal development, plasma exposure (AUC) was approximately 4 times that in humans at the maximum recommended human dose (MRHD) of 60 mg/day.

Oral administration of atogepant (0, 30, 90, or 130 mg/kg/day) to pregnant rabbits during the period of organogenesis resulted in an increase in fetal visceral and skeletal variations at the highest dose tested (130 mg/kg/day), which was associated with minimal maternal toxicity. At the no-effect dose (90 mg/kg/day) for adverse effects on embryofetal development, plasma exposure (AUC) was approximately 3 times that in humans at the MRHD.

Oral administration of atogepant (0, 15, 45, or 125 mg/kg/day) to rats throughout gestation and lactation resulted in decreased pup body weight at the highest dose tested (125 mg/kg/day), which persisted into adulthood. At the no-effect dose (45 mg/kg/day) for adverse effects on pre- and postnatal development, plasma exposure (AUC) was approximately 5 times that in humans at the MRHD.

8.2 Lactation

There are no data on the presence of atogepant in human milk, the effects of atogepant on the breastfed infant, or the effects of atogepant on milk production. In lactating rats, oral dosing with atogepant resulted in levels of atogepant in milk approximately 2-fold higher than that in maternal plasma. The developmental and health benefits of breastfeeding should be considered along with the mother's clinical need for QULIPTA and any potential adverse effects on the breastfed infant from QULIPTA or from the underlying maternal condition.

8.4 Pediatric Use

Safety and effectiveness in pediatric patients have not been established.

8.5 Geriatric Use

Population pharmacokinetic modeling suggests no clinically significant pharmacokinetic differences between elderly and younger subjects. Clinical studies of QULIPTA did not include sufficient numbers of patients aged 65 years and over to determine whether they respond differently from younger patients. In general, dose selection for an elderly patient should be cautious, usually starting at the low end of the dosing range reflecting the greater frequency of decreased hepatic, renal, or cardiac function, and of concomitant disease or other drug therapy.

8.6 Renal Impairment

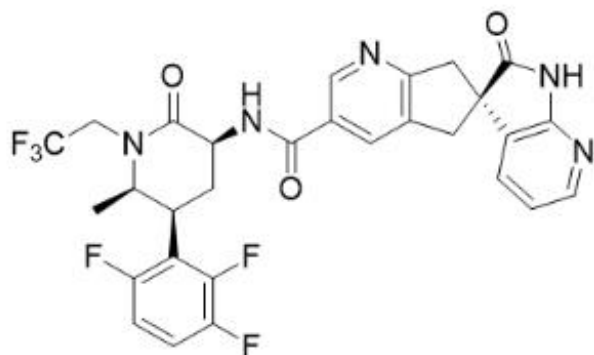
The renal route of elimination plays a minor role in the clearance of atogepant [see *Clinical Pharmacology* (12.3)]. For episodic migraine, in patients with severe renal impairment (CL_{cr} 15-29 mL/min) and in patients with end-stage renal disease (ESRD) (CL_{cr} <15 mL/min), the recommended dosage of QULIPTA is 10 mg once daily; in patients with ESRD undergoing intermittent dialysis, QULIPTA should preferably be taken after dialysis [see *Dosage and Administration* (2.2)]. For chronic migraine, avoid use of QULIPTA in patients with severe renal impairment and in patients with ESRD. No dose adjustment is recommended for patients with mild or moderate renal impairment.

8.7 Hepatic Impairment

No dose adjustment of QULIPTA is recommended for patients with mild or moderate hepatic impairment. Avoid use of QULIPTA in patients with severe hepatic impairment [see *Adverse Reactions (6.1) and Clinical Pharmacology (12.3)*].

11 DESCRIPTION

The active ingredient of QULIPTA is atogepant, a calcitonin gene-related peptide (CGRP) receptor antagonist. The chemical name of atogepant is (3'S)-N-[(3S,5S,6R)-6-methyl-2-oxo-1-(2,2,2-trifluoroethyl)-5-(2,3,6-trifluorophenyl)piperidin-3-yl]-2'-oxo-1',2',5,7-tetrahydrospiro[cyclopenta[*b*]pyridine-6,3'-pyrrolo[2,3-*b*]pyridine]-3-carboxamide, and it has the following structural formula:



The molecular formula is C₂₉H₂₃F₆N₅O₃ and molecular weight is 603.5. Atogepant is a white to off-white powder. It is freely soluble in ethanol, soluble in methanol, sparingly soluble in acetone, slightly soluble in acetonitrile, and practically insoluble in water.

QULIPTA is available as tablets for oral administration containing 10 mg, 30 mg, or 60 mg atogepant. The inactive ingredients include colloidal silicon dioxide, croscarmellose sodium, mannitol, microcrystalline cellulose, polyvinylpyrrolidone vinyl acetate copolymer, sodium chloride, sodium stearyl fumarate, and vitamin E polyethylene glycol succinate.

12 CLINICAL PHARMACOLOGY

12.1 Mechanism of Action

Atogepant is a calcitonin gene-related peptide (CGRP) receptor antagonist.

12.2 Pharmacodynamics

Cardiac Electrophysiology

At a dose 5 times the maximum recommended daily dose, QULIPTA does not prolong the QT interval to any clinically relevant extent.

12.3 Pharmacokinetics

Absorption

Following oral administration of QULIPTA, atogepant is absorbed with peak plasma concentrations at approximately 1 to 2 hours. Atogepant displays dose-proportional pharmacokinetics up to 170 mg per day (approximately 3 times the highest recommended dosage), with no accumulation.

Effect of Food

When QULIPTA was administered with a high-fat meal, the food effect was not significant (AUC and C_{max} were reduced by approximately 18% and 22%, respectively, with no effect on median time to maximum atogepant plasma concentration). QULIPTA was administered without regard to food in clinical efficacy studies.

Distribution

Plasma protein binding of atogepant was not concentration-dependent in the range of 0.1 to 10 μ M; the unbound fraction of atogepant was approximately 4.7% in human plasma. The mean apparent volume of distribution of atogepant (V_z/F) after oral administration is approximately 292 L.

Elimination

Metabolism

Atogepant is eliminated mainly through metabolism, primarily by CYP3A4. The parent compound (atogepant), and a glucuronide conjugate metabolite (M23) were the most prevalent circulating components in human plasma.

Excretion

The elimination half-life of atogepant is approximately 11 hours. The mean apparent oral clearance (CL/F) of atogepant is approximately 19 L/hr. Following single oral dose of 50 mg 14 C-atogepant to healthy male subjects, 42% and 5% of the dose was recovered as unchanged atogepant in feces and urine, respectively.

Specific Populations

Patients with Renal Impairment

The renal route of elimination plays a minor role in the clearance of atogepant. Based on a population pharmacokinetic analysis, there is no significant difference in the pharmacokinetics of atogepant in patients with mild or moderate renal impairment (CL_{cr} 30-89 mL/min) relative to those with normal renal function (CL_{cr} >90 mL/min). Patients with severe renal impairment or end-stage renal disease (ESRD; CL_{cr} <30 mL/min) have not been studied [see *Dosage and Administration (2.2) and Use in Specific Populations (8.6)*].

Patients with Hepatic Impairment

In patients with pre-existing mild (Child-Pugh Class A), moderate (Child-Pugh Class B), or severe (Child-Pugh Class C) hepatic impairment, the total atogepant exposure was increased by 24%, 15%, and 38%, respectively. Due to a potential for liver injury in patients with severe hepatic impairment, avoid use of QULIPTA in patients with severe hepatic impairment [see *Use in Specific Populations (8.7)*].

Other Specific Populations

Based on a population pharmacokinetic analysis, age, sex, race, and body weight did not

have a significant effect on the pharmacokinetics (C_{max} and AUC) of atogepant. Therefore, no dose adjustments are warranted based on these factors.

Drug Interactions

In Vitro Studies

Enzymes

In vitro, atogepant is not an inhibitor for CYPs 3A4, 1A2, 2B6, 2C8, 2C9, 2C19, or 2D6 at clinically relevant concentrations. Atogepant does not inhibit MAO-A or UGT1A1 at clinically relevant concentrations. Atogepant is not anticipated to be a clinically significant perpetrator of drug-drug interactions through CYP450s, MAO-A, or UGT1A1 inhibition.

Atogepant is not an inducer of CYP1A2, CYP2B6, or CYP3A4 at clinically relevant concentrations.

Transporters

Atogepant is a substrate of P-gp, BCRP, OATP1B1, OATP1B3, and OAT1. Dose adjustment for concomitant use of QULIPTA with inhibitors of OATP is recommended based on a clinical interaction study with a OATP inhibitor [see *Dosage and Administration (2.2)*].

Coadministration of atogepant with BCRP and/or P-gp inhibitors is not expected to increase the exposure of atogepant. Atogepant is not a substrate of OAT3, OCT2, or MATE1.

Atogepant is not an inhibitor of P-gp, BCRP, OAT1, OAT3, NTCP, BSEP, MRP3, or MRP4 at clinically relevant concentrations. Atogepant is a weak inhibitor of OATP1B1, OATP1B3, OCT1, and MATE1. No clinical drug interactions are expected for atogepant as a perpetrator with these transporters.

In Vivo Studies

CYP3A4 Inhibitors

Co-administration of QULIPTA with itraconazole, a strong CYP3A4 inhibitor, resulted in a clinically significant increase (C_{max} by 2.15-fold and AUC by 5.5-fold) in the exposure of atogepant in healthy subjects [see *Drug Interactions (7.1)*].

Physiologically based pharmacokinetic (PBPK) modeling suggested co-administration of QULIPTA with moderate or weak CYP3A4 inhibitors increase atogepant AUC by 1.7- and 1.1-fold, respectively. The changes in atogepant exposure when coadministered with weak or moderate CYP3A4 inhibitors are not expected to be clinically significant.

CYP3A4 Inducers

Co-administration of QULIPTA with rifampin, a strong CYP3A4 inducer, decreased atogepant AUC by 60% and C_{max} by 30% in healthy subjects [see *Drug Interactions (7.2)*]. No dedicated drug interaction studies were conducted to assess concomitant use with moderate CYP3A4 inducers. Moderate inducers of CYP3A4 can decrease atogepant exposure [see *Drug Interactions (7.2)*]. Co-administration of QULIPTA with topiramate, a weak inducer of CYP3A4, decreased atogepant mean steady-state AUC_{0-τ} by 25% and mean steady-state C_{max} by 24% in healthy subjects [see *Drug Interactions (7.2)*].

BCRP/OATP/P-gp Inhibitors

Co-administration of QULIPTA with single dose rifampin, an OATP inhibitor, increased atogepant AUC by 2.85-fold and C_{max} by 2.23-fold in healthy subjects [see *Drug Interactions (7.3)*].

Co-administration of QULIPTA with quinidine, a P-gp inhibitor, increased atogepant AUC by 26% and C_{max} by 4% in healthy subjects. The changes in atogepant exposure when co-administered with P-gp inhibitors are not expected to be clinically significant.

PBPK modeling suggests that co-administration of QULIPTA with BCRP inhibitors increases atogepant exposure by 1.2-fold. This increase is not expected to be clinically significant.

Other Drug Interaction Evaluations

Co-administration of QULIPTA with oral contraceptive components ethinyl estradiol and levonorgestrel, famotidine, esomeprazole, acetaminophen, naproxen, sumatriptan, or ubrogepant did not result in significant pharmacokinetic interactions for either atogepant or co-administered drugs. Co-administration of QULIPTA with topiramate did not result in clinically significant changes in the pharmacokinetics of topiramate.

13 NONCLINICAL TOXICOLOGY

13.1 Carcinogenesis, Mutagenesis, Impairment of Fertility

Carcinogenicity

Atogepant was administered orally to mice (0, 5, 20, or 75 mg/kg/day in males; 0, 5, 30, 160 mg/kg/day in females) and rats (0, 10, 20, or 100 mg/kg in males; 0, 25, 65, or 200 mg/kg in females) for up to 2 years. There was no evidence of drug-related tumors in either species. Plasma exposures at the highest doses tested in mice and rats were approximately 8 and 20-35 times, respectively, that in humans at the maximum recommended human dose (MRHD) of 60 mg/day.

Mutagenicity

Atogepant was negative in in vitro (Ames, chromosomal aberration test in Chinese Hamster Ovary cells) and in vivo (rat bone marrow micronucleus) assays.

Impairment of Fertility

Oral administration of atogepant (0, 5, 20, or 125 mg/kg/day) to male and female rats prior to and during mating and continuing in females to Gestation Day 7 resulted in no adverse effects on fertility or reproductive performance. Plasma exposures (AUC) at the highest dose tested are approximately 15 times that in humans at the MRHD.

14 CLINICAL STUDIES

14.1 Episodic Migraine

The efficacy of QULIPTA for the preventive treatment of episodic migraine in adults was demonstrated in two randomized, multicenter, double-blind, placebo-controlled studies (Study 1 and Study 2). The studies enrolled patients with at least a 1-year history of migraine with or without aura, according to the International Classification of

Headache Disorders (ICHD-3) diagnostic criteria.

In Study 1 (NCT03777059), 910 patients were randomized 1:1:1:1 to receive QULIPTA 10 mg (N = 222), QULIPTA 30 mg (N = 230), QULIPTA 60 mg (N = 235), or placebo (N = 223), once daily for 12 weeks. In Study 2 (NCT02848326), 652 patients were randomized 1:2:2:2 to receive QULIPTA 10 mg (N = 94), QULIPTA 30 mg (N = 185), QULIPTA 60 mg (N = 187), or placebo (N = 186), once daily for 12 weeks. In both studies, patients were allowed to use acute headache treatments (i.e., triptans, ergotamine derivatives, NSAIDs, acetaminophen, and opioids) as needed. The use of a concomitant medication that acts on the CGRP pathway was not permitted for either acute or preventive treatment of migraine. The studies excluded patients with myocardial infarction, stroke, or transient ischemic attacks within six months prior to screening.

Study 1

The primary efficacy endpoint was the change from baseline in mean monthly migraine days (MMD) across the 12-week treatment period. Secondary endpoints included the change from baseline in mean monthly headache days, the change from baseline in mean monthly acute medication use days, the proportion of patients achieving at least a 50% reduction from baseline in mean MMD (3-month average), the change from baseline in mean monthly Activity Impairment in Migraine-Diary (AIM-D) Performance of Daily Activities (PDA) domain scores, the change from baseline in mean monthly AIM-D Physical Impairment (PI) domain scores, across the 12-week treatment period, and the change from baseline at Week 12 for Migraine Specific Quality of Life Questionnaire version 2.1 (MSQ v2.1) Role Function-Restrictive (RFR) domain scores.

The AIM-D evaluates difficulty with performance of daily activities (PDA domain) and physical impairment (PI domain) due to migraine, with scores ranging from 0 to 100. Higher scores indicate greater impact of migraine, and reductions from baseline indicate improvement. The MSQ v2.1 Role Function-Restrictive (RFR) domain score assesses how often migraine impacts function related to daily social and work-related activities over the past 4 weeks, with scores ranging from 0 to 100. Higher scores indicate lesser impact of migraine on daily activities, and increases from baseline indicate improvement.

Patients had a mean age of 42 years (range 18 to 73 years), 89% were female, 83% were White, 14% were Black, and 9% were of Hispanic or Latino ethnicity. The mean migraine frequency at baseline was approximately 8 migraine days per month and was similar across treatment groups. A total of 805 (88%) patients completed the 12-week double-blind study period. Key efficacy results of Study 1 are summarized in Table 3.

Table 3: Efficacy Endpoints in Study 1

	QULIPTA 10 mg N=214	QULIPTA 30 mg N=223	QULIPTA 60 mg N=222	Placebo N=214
Monthly Migraine Days (MMD) across 12 weeks				
Baseline	7.5	7.9	7.8	7.5
Mean change from baseline	-3.7	-3.9	-4.2	-2.5
Difference from placebo	-1.2	-1.4	-1.7	

p-value	<0.001	<0.001	<0.001	
Monthly Headache Days across 12 weeks				
Baseline	8.4	8.8	9.0	8.4
Mean change from baseline	-3.9	-4.0	-4.2	-2.5
Difference from placebo	-1.4	-1.5	-1.7	
p-value	<0.001	<0.001	<0.001	
Monthly Acute Medication Use Days across 12 weeks				
Baseline	6.6	6.7	6.9	6.5
Mean change from baseline	-3.7	-3.7	-3.9	-2.4
Difference from placebo	-1.3	-1.3	-1.5	
p-value	<0.001	<0.001	<0.001	
≥ 50% MMD Responders across 12 weeks				
% Responders	56	59	61	29
Difference from placebo (%)	27	30	32	
p-value	<0.001	<0.001	<0.001	
MSQ v2.1 RFR Domain* at week 12				
Baseline	44.9	44.0	46.8	46.8
Mean change from baseline	30.4	30.5	31.3	20.5
Difference from placebo	9.9	10.1	10.8	
p-value	<0.001	<0.001	<0.001	
AIM-D PDA Domain** across 12 weeks				
Baseline	15.5	16.9	15.9	15.2
Mean change from baseline	-7.3	-8.6	-9.4	-6.1
Difference from placebo	-1.2	-2.5	-3.3	
p-value	NS [†]	<0.001	<0.001	
AIM-D PI Domain*** across 12 weeks				
Baseline	11.7	13.0	11.6	11.2
Mean change from baseline	-5.1	-6.0	-6.5	-4.0
Difference from placebo	-1.1	-2.0	-2.5	
p-value	NS [†]	0.002	<0.001	
* Migraine Specific Quality of Life Questionnaire version 2.1 Role Function-Restrictive domain score				
** Activity Impairment in Migraine-Diary Performance of Daily Activities domain score				
*** Activity Impairment in Migraine-Diary Physical Impairment domain score				
†Not statistically significant (NS)				

Figure 1 shows the mean change from baseline in MMD in Study 1. Patients treated with QULIPTA had greater mean decreases from baseline in MMD across the 12-week treatment period compared to patients who received placebo.

Figure 1: Change from Baseline in Monthly Migraine Days in Study 1

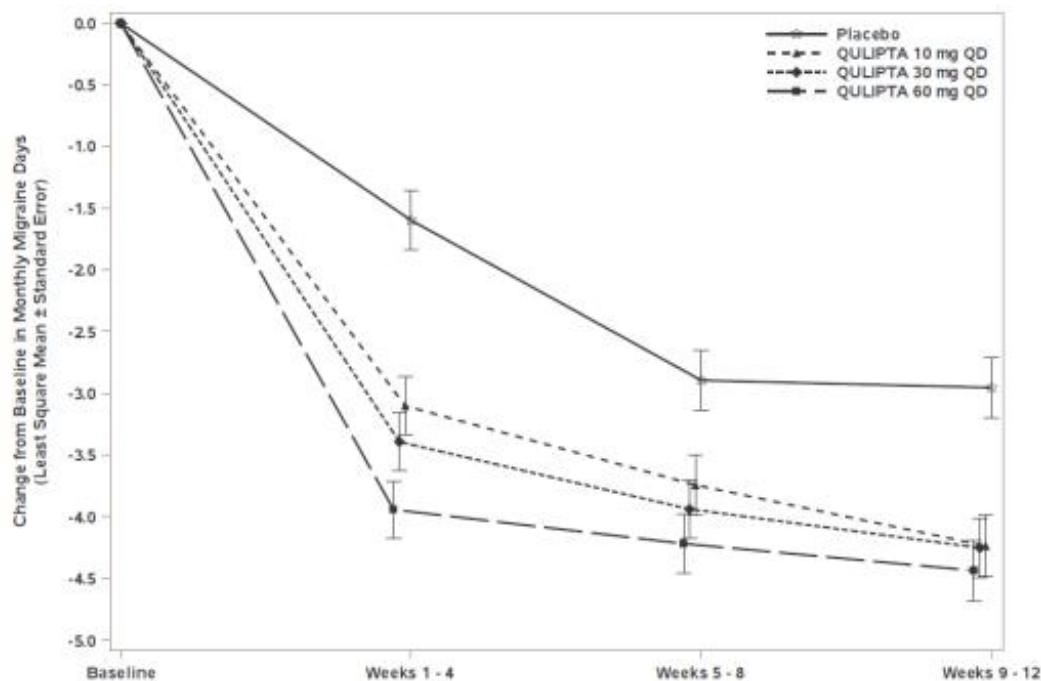
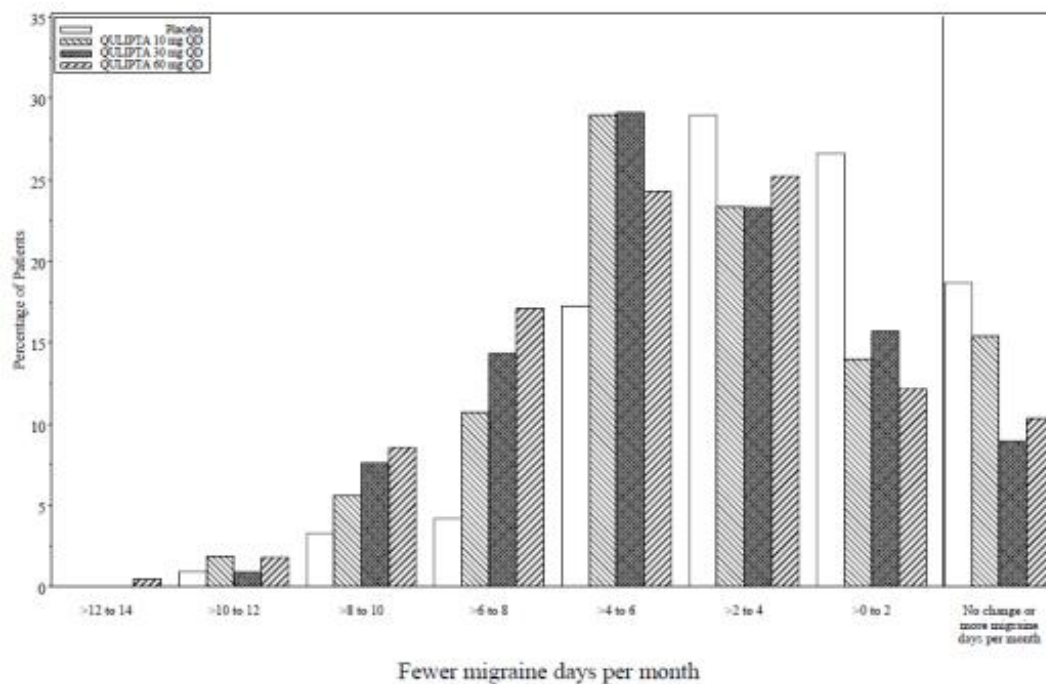


Figure 2 shows the distribution of change from baseline in mean MMD across the 12-week treatment period, in 2-day increments, by treatment group. A treatment benefit over placebo for all doses of QULIPTA is seen across a range of mean changes from baseline in MMD.

Figure 2: Distribution of Change from Baseline in Mean Monthly Migraine Days by Treatment Group in Study 1



The primary efficacy endpoint was the change from baseline in mean monthly migraine days across the 12-week treatment period.

Patients had a mean age of 40 years (range: 18 to 74 years), 87% were female, 76% were White, 20% were Black, and 15% were of Hispanic or Latino ethnicity. The mean migraine frequency at baseline was approximately 8 migraine days per month. A total of 541 (83%) patients completed the 12-week double-blind study period.

In Study 2, there was a significantly greater reduction in mean monthly migraine days across the 12-week treatment period in all three QULIPTA treatment groups, compared with placebo, as summarized in Table 4.

Table 4: Efficacy Endpoints in Study 2

	QULIPTA 10 mg N=92	QULIPTA 30 mg N=182	QULIPTA 60 mg N=177	Placebo N=178
Monthly Migraine Days (MMD) across 12 weeks				
Baseline	7.6	7.6	7.7	7.8
Mean change from baseline	-4.0	-3.8	-3.6	-2.8
Difference from placebo	-1.1	-0.9	-0.7	
p-value	0.024	0.039	0.039	
Monthly Headache Days across 12 weeks				
Baseline	8.9	8.7	8.9	9.1
Mean change from baseline	-4.3	-4.2	-3.9	-2.9
Difference from placebo	-1.4	-1.2	-0.9	
p-value	0.024	0.039	0.039	

Figure 3 shows the mean change from baseline in MMD in Study 2. Patients treated with QULIPTA had greater mean decreases from baseline in MMD across the 12-week treatment period compared to patients who received placebo.

Figure 3: Change from Baseline in Monthly Migraine Days in Study 2

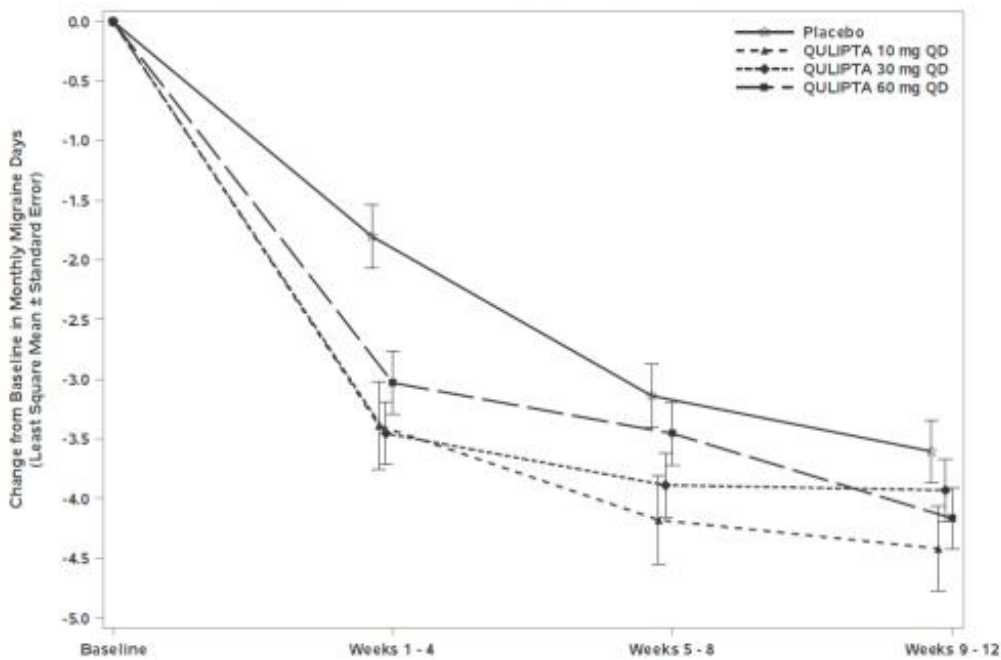
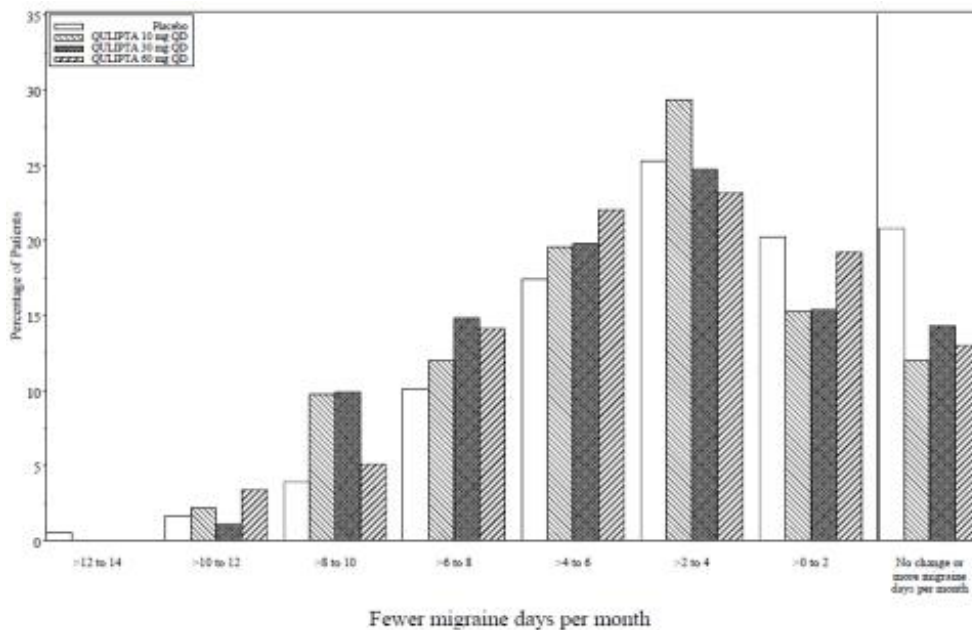


Figure 4 shows the distribution of change from baseline in mean MMD across the 12-week treatment period, in 2-day increments, by treatment group. A treatment benefit over placebo for all doses of QULIPTA is seen across a range of mean changes from baseline in MMD.

Figure 4: Distribution of Change from Baseline in Mean Monthly Migraine Days by Treatment Group in Study 2



14.2 Chronic Migraine

Study 3

The efficacy of QULIPTA for the preventive treatment of chronic migraine in adults was demonstrated in a randomized, multicenter, double-blind, placebo-controlled study (Study 3). The study enrolled patients with at least a 1-year history of chronic migraine, according to the ICHD-3 diagnostic criteria.

Study 3 (NCT03855137) included randomization of patients to QULIPTA 60 mg once daily (N = 262) or placebo (N = 259) for 12 weeks. A subset of patients (11%) was allowed to use one concomitant migraine preventive medication. Patients were allowed to use acute headache treatments (i.e., triptans, ergotamine derivatives, NSAIDs, acetaminophen, and opioids) as needed. Patients with medication overuse headache also were enrolled. The use of a concomitant medication that acts on the CGRP pathway was not permitted for either acute or preventive treatment of migraine. The study excluded patients with myocardial infarction, stroke, or transient ischemic attacks within six months prior to screening.

The primary efficacy endpoint was the change from baseline in mean MMD across the 12-week treatment period. Secondary endpoints included the change from baseline in mean monthly headache days, the change from baseline in mean monthly acute medication use days, the proportion of patients achieving at least a 50% reduction from baseline in mean MMD (3-month average), the change from baseline in mean monthly AIM-D PDA domain scores, the change from baseline in mean monthly AIM-D PI domain scores, across the 12-week treatment period, and the change from baseline at Week 12 for MSQ v2.1 RFR domain scores.

Patients had a mean age of 42 years (range 18 to 74 years), 87% were female, 60% were White, 3% were Black, 36% were Asian, and 4% were of Hispanic or Latino ethnicity. The mean migraine frequency at baseline was approximately 19 migraine days per month and was similar across treatment groups. A total of 463 (89%) of these patients completed the 12-week double-blind study period.

Key efficacy results of Study 3 are summarized in Table 5.

Table 5: Efficacy Endpoints in Study 3

	QULIPTA 60 mg QD N=256	Placebo N=246
Monthly Migraine Days (MMD) across 12 weeks		
Baseline	19.2	18.9
Mean change from baseline	-6.9	-5.1
Difference from placebo	-1.8	
p-value	<0.001	
Monthly Headache Days across 12 weeks		
Baseline	21.5	21.4
Mean change from baseline	-7.0	-5.1
Difference from placebo	-1.9	
p-value	<0.001	
Monthly Acute Medication Use Days across 12 weeks		
Baseline	15.5	15.4
Mean change from baseline	-6.2	-4.1
Difference from placebo	-2.1	
p-value	<0.001	
≥ 50% MMD Responders across 12 weeks		
% Responders	41	26

Difference from placebo (%)	15	
p-value	<0.001	
MSQ v2.1 RFR Domain* at week 12		
Baseline	43.4	43.9
Mean change from baseline	23.3	17.2
Difference from placebo	6.2	
p-value	<0.001	
AIM-D PDA Domain** across 12 weeks		
Baseline	31.2	29.5
Mean change from baseline	-12.8	-9.4
Difference from placebo	-3.4	
p-value	<0.001	
AIM-D PI Domain*** across 12 weeks		
Baseline	27.1	25.2
Mean change from baseline	-10.6	-7.9
Difference from placebo	-2.7	
p-value	0.003	

* Migraine Specific Quality of Life Questionnaire version 2.1 Role Function-Restrictive domain score

** Activity Impairment in Migraine-Diary Performance of Daily Activities domain score

*** Activity Impairment in Migraine-Diary Physical Impairment domain score

Figure 5 shows the mean change from baseline in MMD in Study 3. Patients treated with QULIPTA had greater mean decreases from baseline in MMD across the 12-week treatment period compared to patients who received placebo.

Figure 5: Change from Baseline in Monthly Migraine Days in Study 3

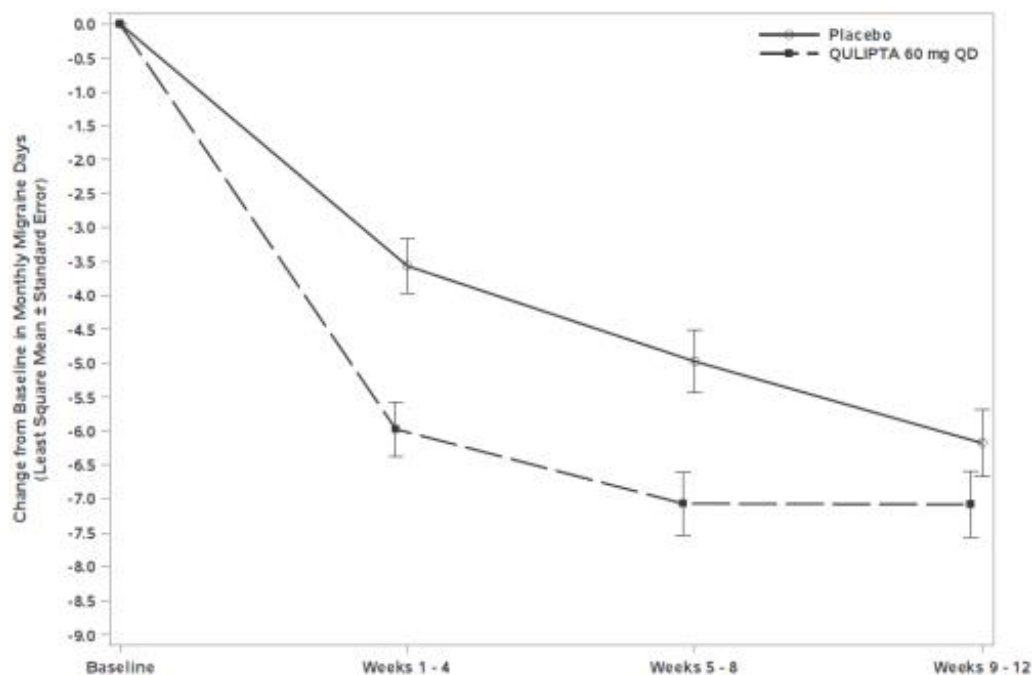
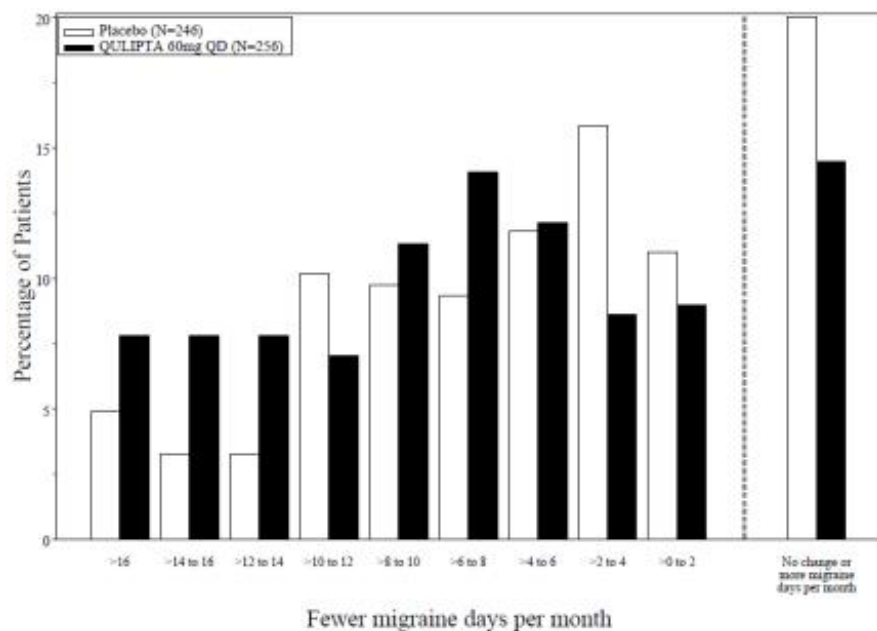


Figure 6 shows the distribution of change from baseline in mean MMD across the 12-

week treatment period, in 2-day increments, by treatment group. A treatment benefit of QULIPTA over placebo is seen across a range of mean changes from baseline in MMD.

Figure 6: Distribution of Change from Baseline in Mean Monthly Migraine Days by Treatment Group in Study 3



16 HOW SUPPLIED/STORAGE AND HANDLING

16.1 How Supplied

QULIPTA 10 mg is supplied as white to off-white, round biconvex tablets debossed with “A” and “10” on one side in the following packaging presentations:

- Bottle of 30, NDC: 0074-7095-30

QULIPTA 30 mg is supplied as white to off-white, oval biconvex tablets debossed with “A30” on one side in the following packaging presentations:

- Bottle of 30, NDC: 0074-7096-30

QULIPTA 60 mg is supplied as white to off-white, oval biconvex tablets debossed with “A60” on one side in the following packaging presentations:

- Bottle of 30, NDC: 0074-7094-30

16.2 Storage and Handling

Store between 20°C and 25°C (68°F and 77°F); excursions permitted between 15°C and 30°C (59°F and 86°F) [see *USP Controlled Room Temperature*].

17 PATIENT COUNSELING INFORMATION

Advise the patient to read the FDA-approved patient labeling (Patient Information).

Hypersensitivity Reactions

Inform patients about the signs and symptoms of hypersensitivity reactions and that

these reactions can occur with QULIPTA. Advise patients to discontinue QULIPTA and seek immediate medical attention if they experience any symptoms of a hypersensitivity reaction [see *Warnings and Precautions (5.1)*].

Drug Interactions

Inform patients that QULIPTA may interact with certain other drugs, and that dosage modifications of QULIPTA may be recommended when used with some other drugs. Advise patients to report to their healthcare provider the use of any other prescription medications, over-the-counter medications, herbal products, or grapefruit juice [see *Dosage and Administration (2.2)* and *Drug Interactions (7.1, 7.2, 7.3)*].

Manufactured for:
AbbVie Inc.
North Chicago, IL 60064

© 2023 AbbVie. All rights reserved.

QULIPTA and its design are trademarks of Allergan Pharmaceuticals International Limited, an AbbVie company.
20078877 June 2023

<p style="text-align: center;">PATIENT INFORMATION QULIPTA® (kew-LIP-tah) (atogepant) tablets, for oral use</p>
<p>What is QULIPTA?</p> <ul style="list-style-type: none">• QULIPTA is a prescription medicine used for the preventive treatment of migraine in adults. <p>It is not known if QULIPTA is safe and effective in children.</p>
<p>Do not take QULIPTA if you:</p> <ul style="list-style-type: none">• have had an allergic reaction to atogepant or any ingredients in QULIPTA. See the end of this Patient Information leaflet for a complete list of ingredients in QULIPTA.
<p>Before you take QULIPTA tell your healthcare provider about all of your medical conditions, including if you:</p> <ul style="list-style-type: none">• have kidney problems or are on dialysis.• have liver problems.• are pregnant or plan to become pregnant. It is not known if QULIPTA will harm your unborn baby.• are breastfeeding or plan to breastfeed. It is not known if QULIPTA passes into your breast milk. Talk to your healthcare provider about the best way to feed your baby while taking QULIPTA.
<p>Tell your healthcare provider about all the medicines you take, including prescription and over-the-counter medicines, vitamins, and herbal supplements. QULIPTA may affect the way other medicines work, and other medicines may affect how QULIPTA works. Your healthcare provider may need to change the dose of QULIPTA when taken with certain other medicines.</p>

Keep a list of medicines you take to show to your healthcare provider or pharmacist when you get a new medicine.

How should I take QULIPTA?

- Take QULIPTA by mouth with or without food.
- Take QULIPTA exactly as your healthcare provider tells you to take it.

What are the possible side effects of QULIPTA?

QULIPTA can cause serious side effects, including:

Allergic (hypersensitivity) reactions, including anaphylaxis: Serious allergic reactions can happen when you take QULIPTA or days after. Stop taking QULIPTA and get emergency medical help right away if you get any of the following symptoms, which may be part of a serious allergic reaction:

- swelling of the face, lips, or tongue
- itching
- trouble breathing
- hives

- rash

The most common side effects of QULIPTA include: nausea, constipation, and fatigue/sleepiness.

These are not all of the possible side effects of QULIPTA. Call your doctor for medical advice about side effects. You may report side effects to FDA at 1-800-FDA-1088.

How should I store QULIPTA?

- Store QULIPTA at room temperature between 68°F to 77°F (20°C to 25°C).

Keep QULIPTA and all medicines out of the reach of children.

General information about the safe and effective use of QULIPTA.

Medicines are sometimes prescribed for purposes other than those listed in a Patient Information leaflet. Do not use QULIPTA for a condition for which it was not prescribed. Do not give QULIPTA to other people, even if they have the same symptoms you have. It may harm them. You can ask your pharmacist or healthcare provider for information about QULIPTA that is written for health professionals.

What are the ingredients in QULIPTA?

Active ingredient: atogepant

Inactive ingredients: colloidal silicon dioxide, croscarmellose sodium, mannitol, microcrystalline cellulose, polyvinylpyrrolidone vinyl acetate copolymer, sodium chloride, sodium stearyl fumarate, and vitamin E polyethylene glycol succinate.

Manufactured for:

AbbVie Inc.

North Chicago, IL 60064

© 2023 AbbVie. All rights reserved.

QULIPTA and its design are trademarks of Allergan Pharmaceuticals International Limited, an AbbVie company.

This Patient Information has been approved by the U.S. Food and Drug Administration

Revised: 6/2023

20078877

PRINCIPAL DISPLAY PANEL

NDC 0074-**7095**-30

Rx Only

QULIPTA[®]

(atogepant) tablets

10 mg

Contains 30 Tablets



PRINCIPAL DISPLAY PANEL

NDC 0074-**7096**-30

Rx Only

QULIPTA[®]

(atogepant) tablets

30 mg

Contains 30 Tablets



PRINCIPAL DISPLAY PANEL

NDC 0074-**7094**-30

Rx Only

QULIPTA[®]
(atogepant) tablets

60 mg

Contains 30 Tablets



QULIPTA
atogepant tablet

Product Information

Product Type	HUMAN PRESCRIPTION DRUG	Item Code (Source)	NDC:0074-7095
Route of Administration	ORAL		

Active Ingredient/Active Moiety

Ingredient Name	Basis of Strength	Strength
ATOGEPA (UNII: 7CRV8RR151) (ATOGEPA - UNII:7CRV8RR151)	ATOGEPA	10 mg

Inactive Ingredients

Ingredient Name	Strength
SILICON DIOXIDE (UNII: ETJ7Z6XBU4)	
CROSCARMELOSE SODIUM (UNII: M28OL1HH48)	
MANNITOL (UNII: 3OWL53L36A)	
MICROCRYSTALLINE CELLULOSE (UNII: OP1R32D61U)	
COPOVIDONE K25-31 (UNII: D9C330MD8B)	
SODIUM CHLORIDE (UNII: 451W47IQ8X)	
SODIUM STEARYL FUMARATE (UNII: 7CV7WJK4UI)	
VITAMIN E POLYETHYLENE GLYCOL SUCCINATE (UNII: O03S90U1F2)	

Product Characteristics

Color	white	Score	no score
Shape	ROUND	Size	6mm
Flavor		Imprint Code	A;10
Contains			

Packaging

#	Item Code	Package Description	Marketing Start Date	Marketing End Date
1	NDC:0074-7095-30	30 in 1 BOTTLE; Type 0: Not a Combination Product	09/30/2021	

Marketing Information

Marketing Category	Application Number or Monograph Citation	Marketing Start Date	Marketing End Date
NDA	NDA215206	09/30/2021	

QULIPTA

atogepant tablet

Product Information

Product Type	HUMAN PRESCRIPTION DRUG	Item Code (Source)	NDC:0074-7096
Route of Administration	ORAL		

Active Ingredient/Active Moiety

Ingredient Name	Basis of Strength	Strength
ATOGEPA NT (UNII: 7CRV8RR151) (ATOGEPANT - UNII: 7CRV8RR151)	ATOGEPA NT	30 mg

Inactive Ingredients

Ingredient Name	Strength
SILICON DIOXIDE (UNII: ETJ7Z6XBU4)	
CROSCARME LLOSE SODIUM (UNII: M28OL1HH48)	
MANNITOL (UNII: 3OWL53L36A)	
MICROCRY STALLINE CELLULOSE (UNII: OP1R32D61U)	
COPOVIDONE K25-31 (UNII: D9C330MD8B)	
SODIUM CHLORIDE (UNII: 451W47IQ8X)	
SODIUM STEAR YL FUMARATE (UNII: 7CV7WJK4UI)	
VITAMIN E POLYETHYLENE GLYCOL SUCCINATE (UNII: O03S90U1F2)	

Product Characteristics

Color	white	Score	no score
Shape	OVAL	Size	7mm
Flavor		Imprint Code	A30
Contains			

Packaging

#	Item Code	Package Description	Marketing Start Date	Marketing End Date
1	NDC:0074-7096-30	30 in 1 BOTTLE; Type 0: Not a Combination Product	09/30/2021	
2	NDC:0074-7096-04	4 in 1 BOTTLE; Type 0: Not a Combination Product	10/06/2021	

Marketing Information

Marketing Category	Application Number or Monograph Citation	Marketing Start Date	Marketing End Date
NDA	NDA215206	09/30/2021	

QULIPTA

atogepant tablet

Product Information

Product Type	HUMAN PRESCRIPTION DRUG	Item Code (Source)	NDC:0074-7094
---------------------	-------------------------	---------------------------	---------------

Route of Administration	ORAL			
Active Ingredient/Active Moiety				
	Ingredient Name	Basis of Strength	Strength	
	ATOGE PANT (UNII: 7CRV8RR151) (ATOGE PANT - UNII: 7CRV8RR151)	ATOGE PANT	60 mg	
Inactive Ingredients				
	Ingredient Name	Strength		
	SILICON DIOXIDE (UNII: ETJ7Z6XBU4)			
	CROSCARME LOSE SODIUM (UNII: M28OL1HH48)			
	MANNITOL (UNII: 3OWL53L36A)			
	MICROCRYSTALLINE CELLULOSE (UNII: OP1R32D61U)			
	COPOVIDONE K25-31 (UNII: D9C330MD8B)			
	SODIUM CHLORIDE (UNII: 451W47IQ8X)			
	SODIUM STEARYL FUMARATE (UNII: 7CV7WJK4UI)			
	VITAMIN E POLYETHYLENE GLYCOL SUCCINATE (UNII: O03S90U1F2)			
Product Characteristics				
Color	white	Score	no score	
Shape	OVAL	Size	9mm	
Flavor		Imprint Code	A60	
Contains				
Packaging				
#	Item Code	Package Description	Marketing Start Date	Marketing End Date
1	NDC:0074-7094-30	30 in 1 BOTTLE; Type 0: Not a Combination Product	09/30/2021	
2	NDC:0074-7094-04	4 in 1 BOTTLE; Type 0: Not a Combination Product	10/06/2021	
Marketing Information				
Marketing Category	Application Number or Monograph Citation	Marketing Start Date	Marketing End Date	
NDA	NDA215206	09/30/2021		

Labeler - AbbVie Inc. (078458370)